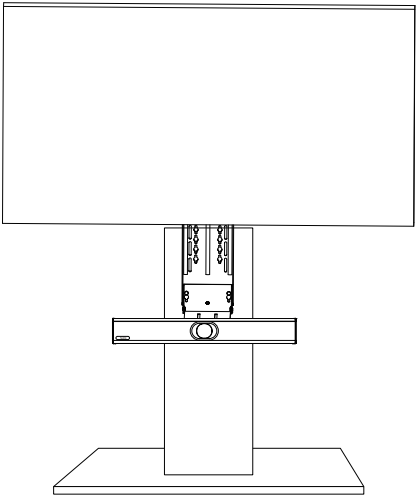


VCS-TV Mount2



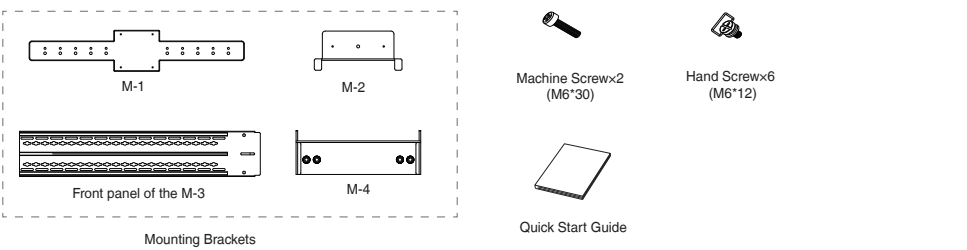
English | 简体中文

Quick Start Guide V1.0(EN,CN)

www.yealink.com

Package Contents

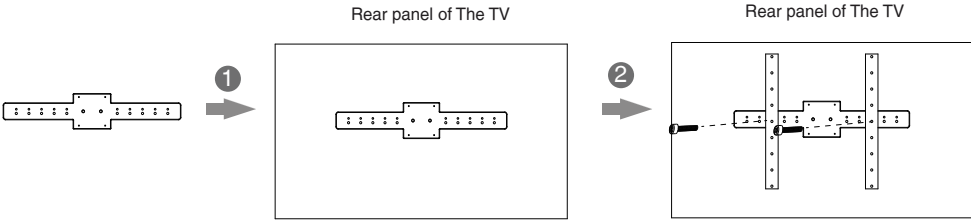
The following items are included in your package. If you find anything missing, contact your system administrator.



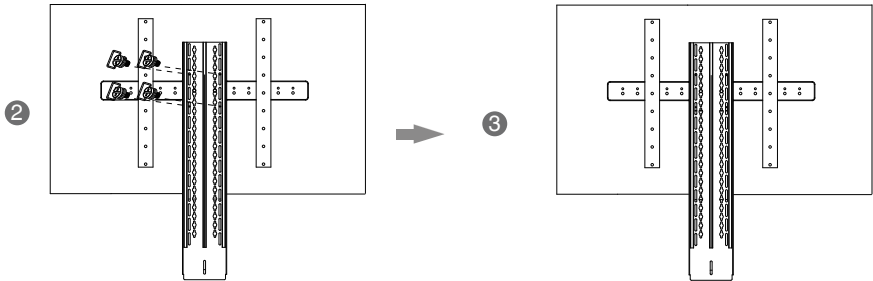
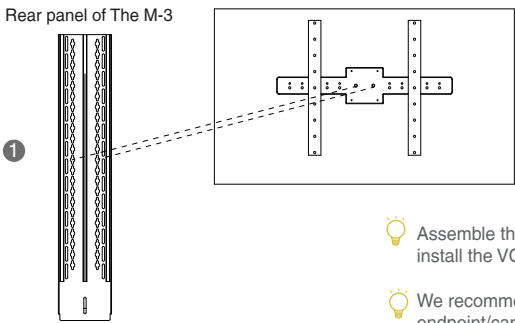
Assembling the TV Mount2

• Method1

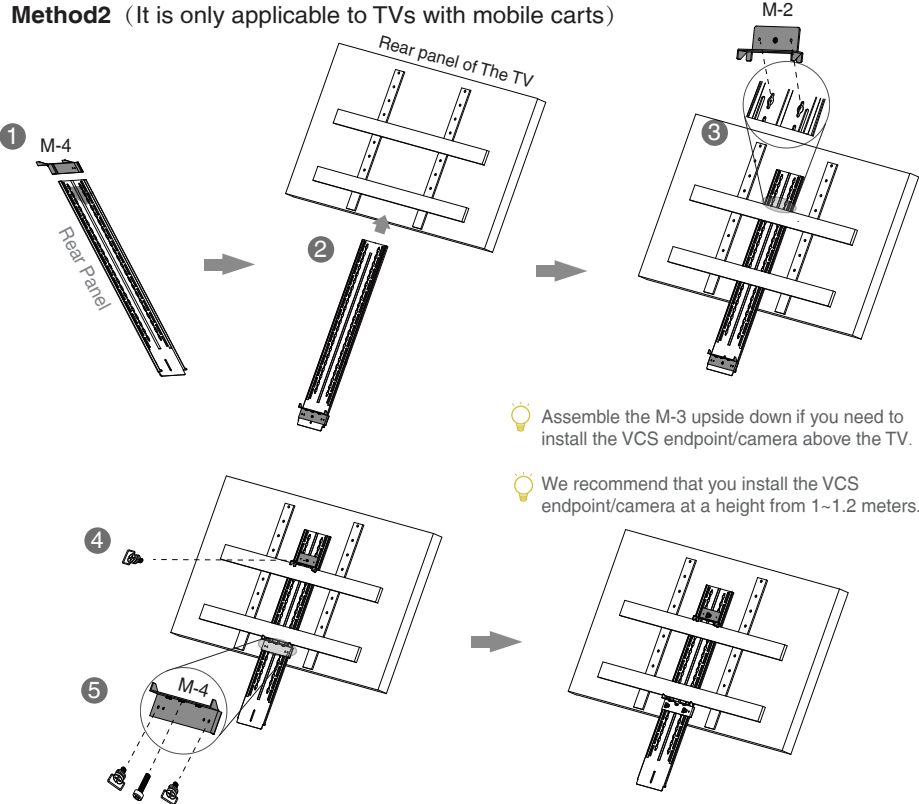
① Assemble the M-1, as shown below:



② Assemble the M-3, as shown below:



• Method2 (It is only applicable to TVs with mobile carts)



Installing the MeetingEye 600/MeetingEye 400/UVC40/MeetingBar A20/MeetingBar A30

You can hang up MeetingEye 600/ MeetingEye 400/UVC40/MeetingBar A20/MeetingBar A30 on the TV mount with the same method. Following is an example of installing MeetingEye 400.

