

Info sheet: DW- and MB Pro series „battery change“

General information:

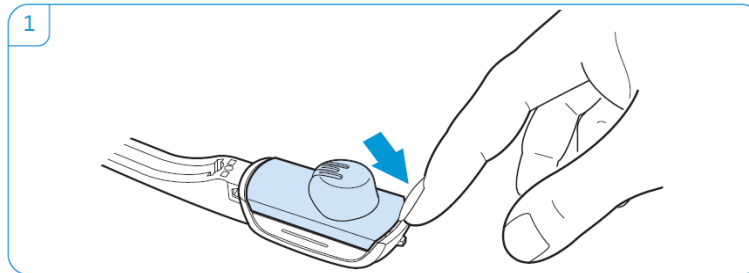
Beware of product damage due to improper handling - Cables can be pinched or severed when you open the battery compartment to jerky.

Carefully open the battery compartment and disconnect the battery connector without pulling on the cables.

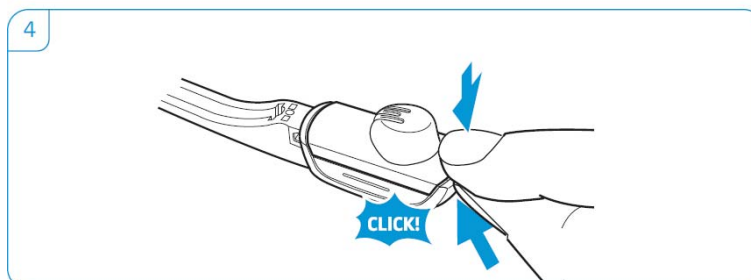
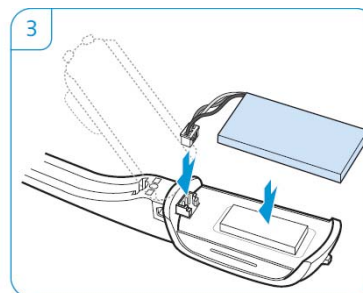
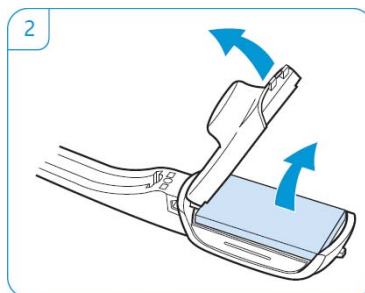
Replacement batteries (# 504374 BATT 03) are available at your Sennheiser partner. Only use the recommended Sennheiser spare batteries. (See Owner's Manual p.15 ff)

DW Office Headset (DW 10)

1. Remove the headband or ear hook and open the battery compartment.

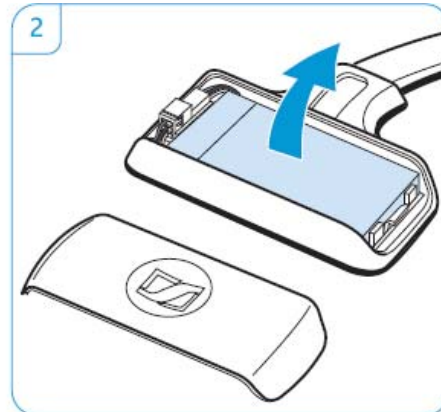


2. Carefully fold the battery cover in the arrow direction through a slight resistance. Remove the battery and carefully loosen the plug of the battery cable.
3. Connect the plug of the new battery to the connector. Pay attention to the orientation of the plug.
4. Close the battery compartment.



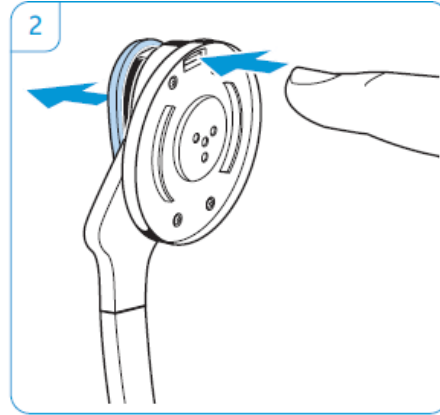
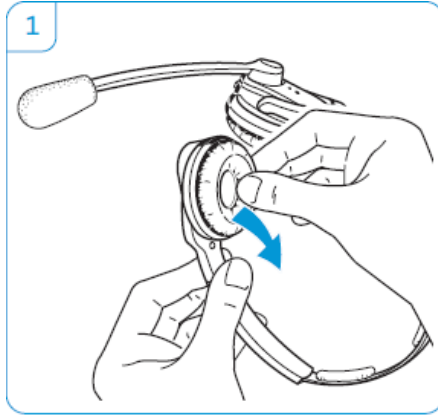
DW Pro 1 Headset (DW 20) and MB Pro 1

1. Open the battery compartment.
2. Remove the battery and carefully loosen the connector from the battery.
3. Connect the plug on the new battery with the socket. Pay attention to the orientation of the plug.
4. Insert the battery compartment cover.



DW Pro 2 Headset (DW 30) and MB Pro 2

1. Pull off the ear pads on the side of the battery compartment. (The battery compartment is located on the opposite of the microphone).
2. Open the battery compartment.



3. Remove the battery and carefully loosen the connector from the battery.
4. Connect the plug of the new battery with the socket. Pay attention to the orientation of the plug.
5. Insert the battery compartment cover.
6. Replace the ear pads on the ear cup and press it on firmly.

