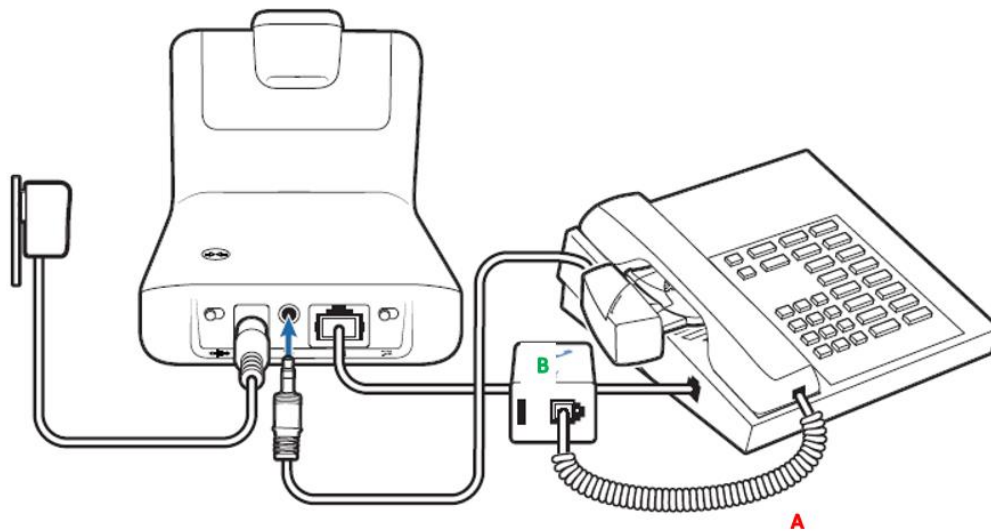




HL10 Lifter setup

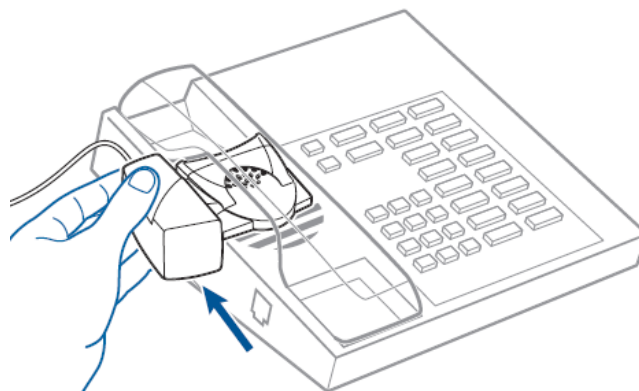


Plugging everything in.

- 1) You will need to unplug your phone receiver (cable **A**) and plug this into the handset port on cable **B**. Cable B is the cable that comes in the box with your headset.
- 2) One end of cable B will plug into the back of the headset base. The other end will plug back into the phone handset port (where you unplugged cable A from)
- 3) The lifter will then plug into the 3.5mm jack in the back of the headset base.
- 4) Plug the headset base into a power socket using supplied power cord.

Attaching the lifter to your phone

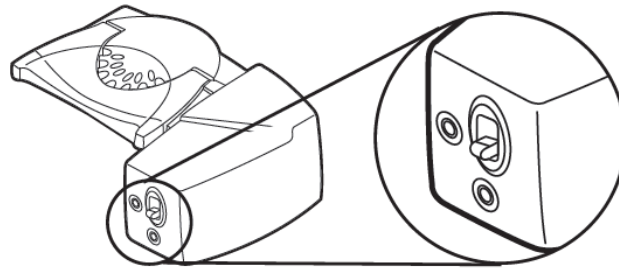
While wearing your headset, slide the lifter under your phones receiver. Press the call control button on the side of your headset to activate the lifter. If you can hear a dial tone then the lifter is in the correct position and no further adjustment is required, remove the protective cover from the sticky pads and stick down in this tested position on the phone.



So you pressed the button on your headset and the lifter arm moved but you still cant hear dial tone?

Is there an open line on the phone?

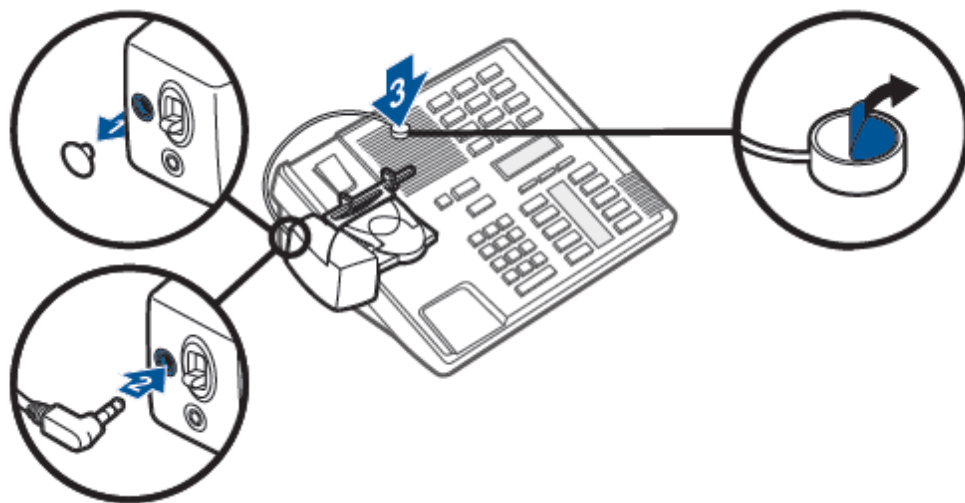
If not you may need to adjust the height that the lifter lifts. This can be done via the toggle switch at the back of the lifter, moving this switch up will make the lifter lift higher, moving it down will make it lift lower.



You can hear dial tone, but the headset is not beeping to alert you to incoming calls.

Make sure the lifter is positioned directly over the phones speaker. Some phones speakers are not directly under the phones receiver, in these situations you will need to use the external ring detector that comes in the box with the lifter. Remove the cover (step 1) and plug this into the back of the lifter (step 2) and then stick the ringer mic directly over your phones speaker (step 3). Then get someone to give you a call to test.

Also make sure your phone ring tone is a standard ringer. Nothing musical and that the volume on the phone is turned up.



Tried everything and still not working?

Call Our Friendly Experts

1300 889 728