

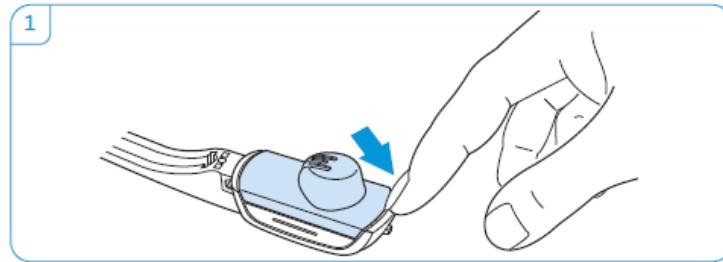
Simply Headsets



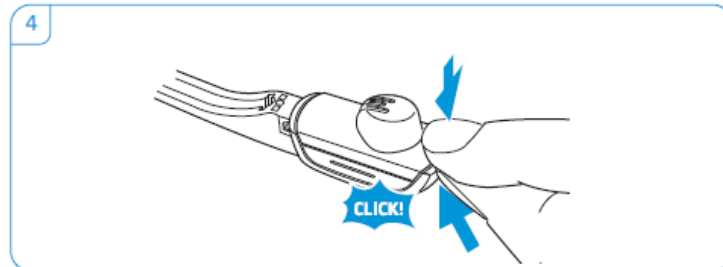
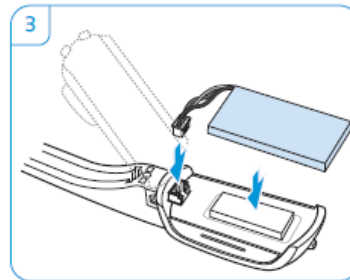
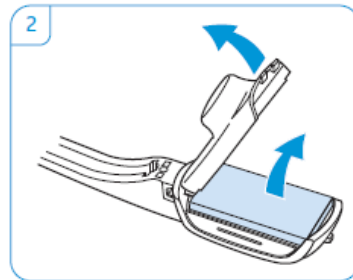
- ▶ Carefully open the battery compartment and loosen the connector plug of the rechargeable battery.

Spare rechargeable batteries are available from your Sennheiser partner. Only use spare rechargeable batteries recommended by Sennheiser.

- 1 Remove the ear hook or the headband (see page 14) and open the battery compartment.



- 2 Carefully move the battery compartment cover in the direction of the arrow until you overcome a slight resistance. Remove the rechargeable battery and carefully loosen the connector plug of it.
- 3 Insert the connector plug of the new rechargeable battery into the connection socket. Observe correct orientation of the connector plug.
- 4 Close the battery compartment.



Tried everything and still not working?

Call Our Friendly Experts

1300 889 728

Simply Headsets

