



# Yealink MeetingBar A20 Teams&Zoom Kit



English | 简体中文 | Deutsch | Français | Español

**Quick Start Guide (V1.2)**

# Table of Contents

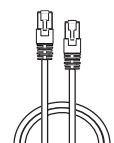
English.....	1
简体中文 .....	5
Deutsch.....	9
Français.....	13
Español.....	17

# Package Contents

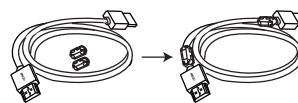
## • Standard accessories



MeetingBar A20



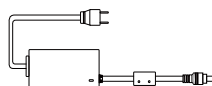
3m Ethernet Cable



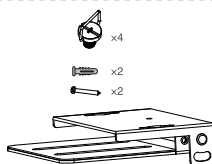
1.8m HDMI Cablex2  
(for the display device)



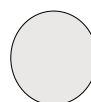
Cable Tiex5



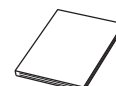
Power Adapter



Mounting Bracket and  
Accessories

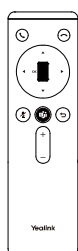


Silicone Padx2



Quick Start Guide

## • Optional accessories

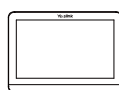


VCR20-Teams



AAA Batteryx2

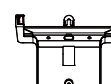
Remote Control Package(only Teams edition)



CTP18



7.5m Ethernet Cable



Mounting Bracket  
and Accessories



Screwdriver

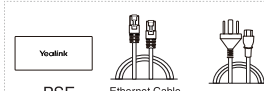


Cable lock box



3M Velcro

Cable Lock Box



PoE Adapter

Touch Panel Package



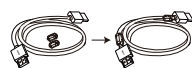
VCH51



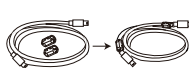
Interface  
Protective Cover



7.5m  
Ethernet Cable



0.6m  
HDMI Cable

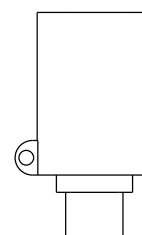


0.6m  
USB Type-C Cable

VCH51 Sharing Kit



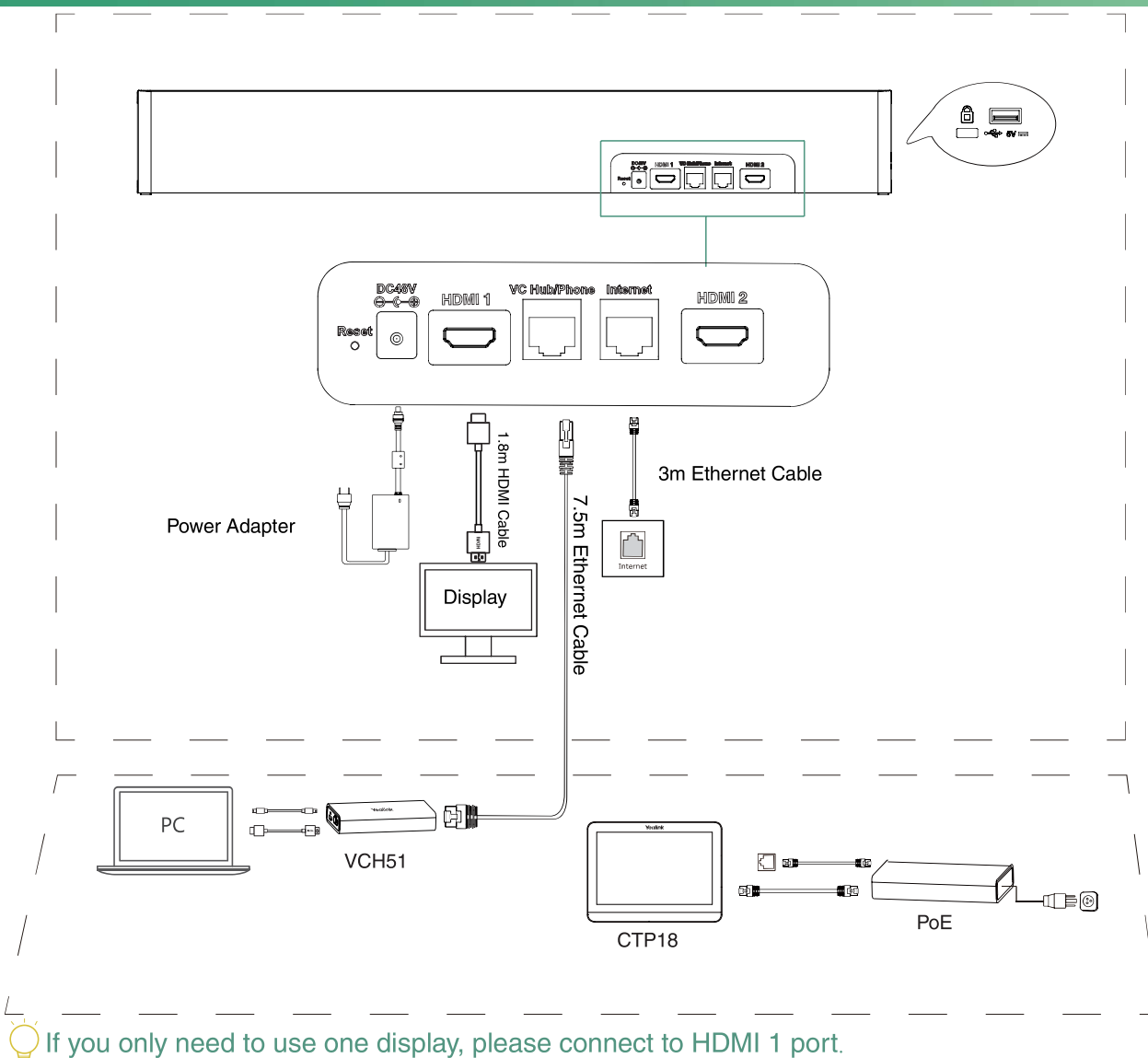
WPP20



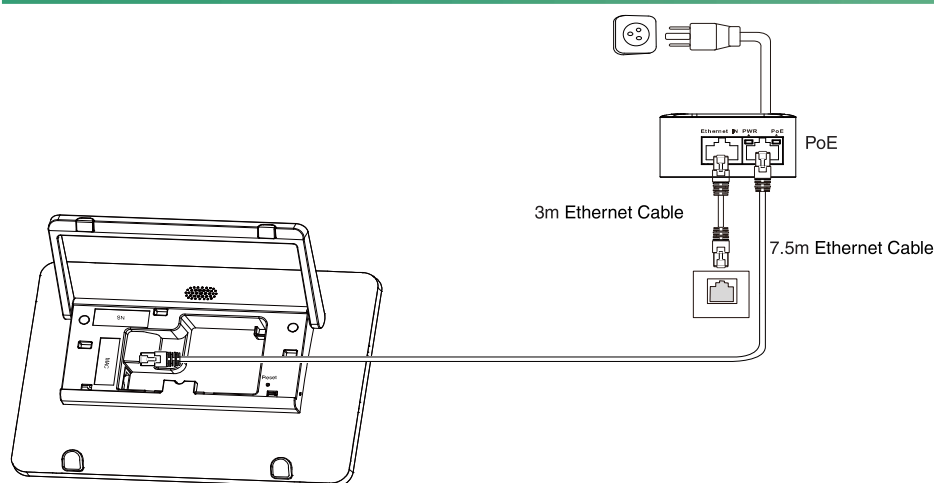
Type-C Adapter

Wireless Presentation Pod

## Endpoint Connection



## CTP18 Connection



### Pair the CTP18 with A20-Teams:

Sign into the same Microsoft account on both CTP18 and the endpoint, then enter the PIN code according to the on-screen prompts, after that the system will be automatically paired with the CTP18.

### Pair the CTP18 with A20-Zoom:

Enter the IP Address of the A20 in CTP18, then the system will be automatically paired with the CTP18.

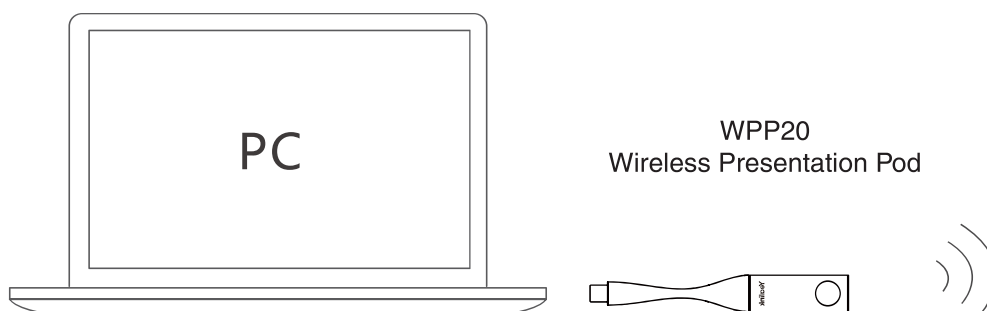
## Wireless Content Sharing

You can use Yealink WPP20 wireless presentation pod for wireless content sharing.

1. Connect the WPP20 to the USB port of the A20.
2. Wait for 3 seconds, the WPP20 LED indicator glows solid green after flashing twice.

The WPP20 is paired with the A20 successfully.

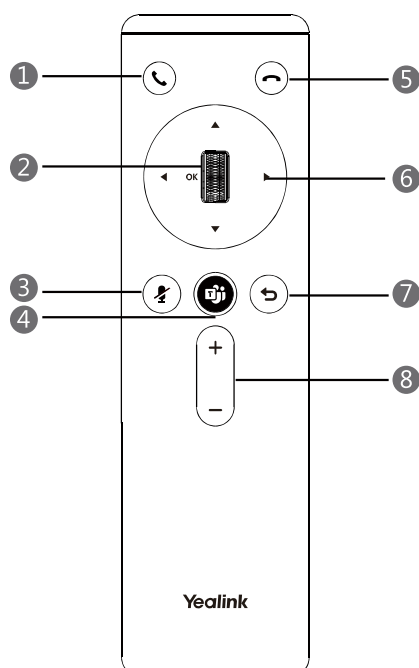
3. Connect the WPP20 to the PC.




## Remote Control and Cable Ties Installation



## VCR20-Teams Remote Control (Teams)



- ① Answer Key
- ② Scroll Wheel/OK Key
- ③ Mute Key
- ④ Teams Key
- ⑤ End Call Key
- ⑥ Navigation Key
- ⑦ Back Key
- ⑧ Volume Up/Down Key

 Please use the mouse when you sign in to the Teams version if you have no remote control.

## Camera Settings

You can configure your camera.

Go to (Teams: **More > Settings > Device Settings**)

(Zoom: **Settings > General > System Settings**)

Select **Exposure Settings**, **White Balance Settings** and **Graphics** to configure exposure, white balance and so on.

Go to (Teams: **More > Settings > Device Settings > Others**)

(Zoom: **Settings > General > System Settings > Others**)

1. Select **Manual**, **Auto Framing** and **Speaker Tracking** in **Framing Mode** field.
2. Select **Reset Camera** to reset camera settings.

For more information, see related documentations, including User Guide and Administrator Guide, on your phone's Support page: <http://support.yealink.com/>. You can also contact the Yealink technical support team for help.